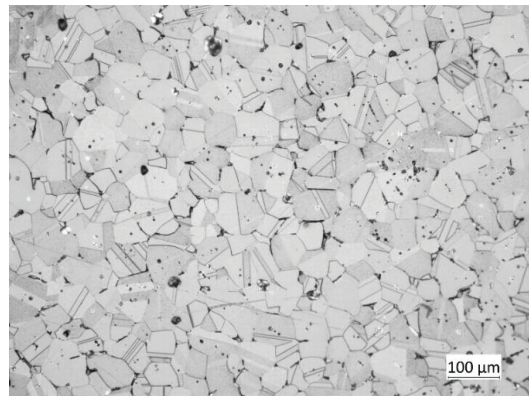
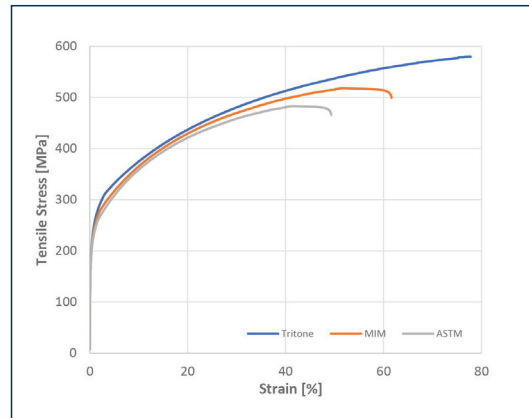


Material datasheet

316L Stainless Steel

Composition – According to ASTM A276-06

Composition	Amount
Carbon	0.03%
Silicon	1.0%
Manganese	2.0%
Phosphorous	0.045%
Sulfur	0.03%
Chromium	16.0-18.0%
Nickel	10.0-14.0%
Molybdenum	4.08%
Iron	Bal.



Typical Mechanical Properties

Typical Mechanical Properties

	Standard	Tritone	MIM MPIF-35 (typical)	Wrought ASTM A276
Ultimate Tensile Strength	ASTM E8	591 MPa	520 MPa	485 MPa
0.2% Yield Strength	ASTM E8	213 MPa	175 MPa	170 MPa
Elongation at Break	ASTM E8	>60%	50%	40%
Hardness	ASTM E18	67 HRB	67 HRB	-
Relative Density	ASTM B962	>99%	95%	100%