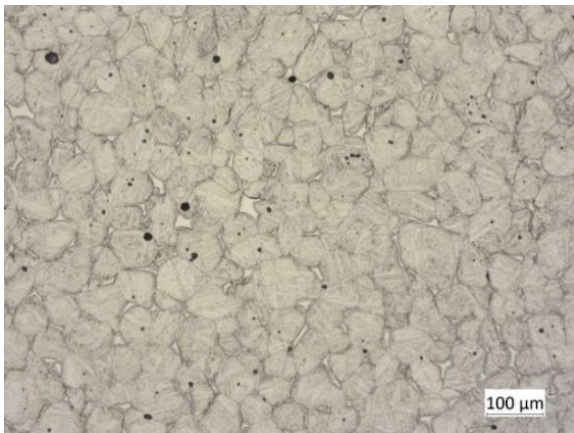
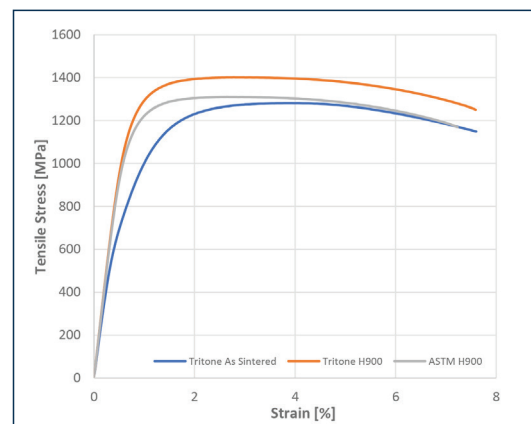


## Material datasheet

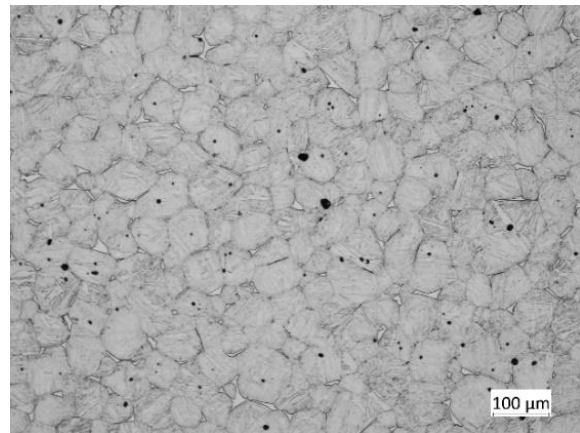
# 15-5 PH Stainless Steel

### Composition – According to ASTM A56

Composition	Amount
Carbon	0.07% max
Silicon	1.0% max
Manganese	1.0% max
Phosphorous	0.04% max
Sulfur	0.03% max
Chromium	14.0-15.5%
Nickel	3.5-5.5%
Copper	2.5-4.5%
Niobium + Tantalum	0.15-0.45%
Iron	Bal.



**As Sintered**



**H900**

## Typical Mechanical Properties

	Standard	Tritone As Sintetered	Tritone H900	Wrought H900 ASTM A564
Ultimate Tensile Strength	ASTM E8	1281 MPa	1401 MPa	1310 MPa
0.2% Yield Strength	ASTM E8	808 MPa	1189 MPa	1170 MPa
Elongation at Break	ASTM E8	9.5%	10.5%	10%
Hardness	ASTM E18	38.72 HRC	44.60 HRC	40 HRC
Relative Density	ASTM B962	99.5%	99.5%	100%



### Stainless Steel

15-5PH

230x60x40; 2.2Kg



### Stainless Steel

15-5PH

45x45x25