

FreeScan UE

SIMPLE HIGH
ACCURACY INSPECTION



SHINING 3D®

P

SIMPLE HIGH ACCURACY INSPECTION

As the blue laser handheld 3D scanner of the FreeScan series, FreeScan UE inherits the iconic features of "high accuracy" and "high precision". At the same time ergonomic and lightweight equipment design make it easier to hold and operate, providing metrology-grade, high-accuracy inspection solutions for the automotive, transportation, aerospace industry, moulding inspection, energy generation, machinery manufacturing etc.

VERSATILE AND USER FRIENDLY

PORTABLE AND LIGHTWEIGHTED

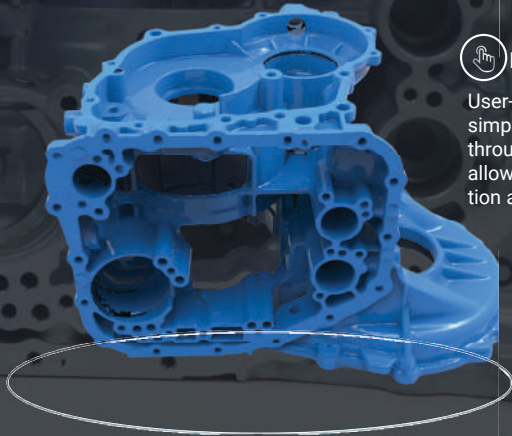
The device weights only 750g, facilitating handheld scanning and avoiding fatigue due to long working time.

SEAMLESS DOCKING TO INSPECTION SOFTWARE

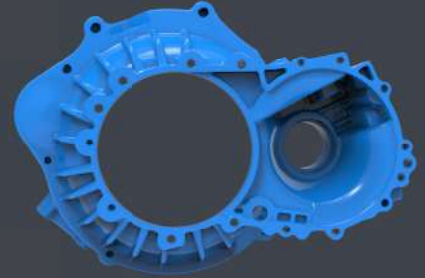
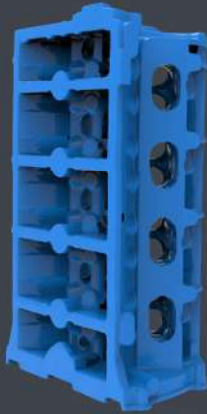
The scan data can be imported into inspection softwares like Geomagic Control X, Verisurf and with one click, increasing the inspection efficiency.

EASY OPERATION

User-friendly operating system with simple software setup and guidance through the whole workflow process, allowing users to master the operation at ease.



DATA PRESENTATION



APPLICATIONS



AUTOMOTIVE INDUSTRY



TRANSPORTATION



MOULD INSPECTION



**ENERGY
MANUFACTURING**



**AEROSPACE
INDUSTRY**



MACHINE MANUFACTURING

Product Model**FreeScan UE7****FreeScan UE11**

Scan Mode	Multiple Lines Scan, Single Line Scan	
Scan Accuracy	Up to 0.02mm	
Volumetric Accuracy	0.02 mm+0.04 mm/m	
Volumetric Accuracy with DigiMetric*	0.02 mm + 0.025 mm/m	
Scan Speed	650,000 points/s	1,020,000 points/s
Working Distance	500mm	
Scan Depth (Depth of Field)	300mm-700mm	
Max. Scan Range	510mm x 520mm	
Point Distance	0.05mm-3mm	
Light Source	14 lines+1 line blue laser	22 lines +1 line blue laser
Laser Class	Class 2M (eye safe)	
Connection Standard	USB 3.0	
Dimensions	298mm x 90mm x 74.5mm	
Weight	750g	
Powering	DC: 12V, 5.0A	
Operating Temperature Range	-20°C - 40°C	
Operating Humidity Range	10%-90%	
Certifications	CE, FCC, ROHS, WEEE	
Inspection Module	Compatible with multiple inspection software solutions such as Geomagic Control X/Control X Essentials, Polyworks, Catia, Verisurf etc.	
Output Formats	OBJ ; STL ; ASC ; PLY ; P3 ; 3MF	
Data Compatibility Software	3D System (Geomagic Solutions), InnovMetric Software (PolyWorks), Dassault Systemes (CATIA V5 & SolidWorks), PTC (Pro/ENGINEER), Siemens (NX & Solid Edge), Verisurf, Autodesk (Inventor, Alias, 3ds Max, Maya, Softimage) etc.	
Recommended Computer Configuration	OS: Win10 Pro 64 bit; Graphics Card: NVIDIA RTX 2060 or higher, GPU Memory: equal or higher 6GB; Processor: Intel Core i7-9750; Memory: ≥32GB	

Volumetric accuracy is the relationship between the accuracy of the 3D data and the size of the object, with a reduction in accuracy of 0.04 mm per 100 cm²a reduction in accuracy of 0.025 mm per 100 cm with DigiMetric. The standard above is determined by measuring the sphere centre distance by splicing the marker points.

Authorized Reseller:

V-GER S.r.l

Registered office: Via Bentivogli, 4 40055

Castenaso (BO) - ITALY

P.IVA - 03387001203

Headquarters: Via Oberdan, 2 - 40055

Villanova di Castenaso(BO) - Italia

Ph & Fax: +39 (0)51 802864

E-mail: info@vger.eu - www.vger.eu

V-GER
COMPETENCE IN 3D SCANNING