

Accelerate Product Innovation with the Carbon® Digital Manufacturing Platform

Carbon is revolutionizing manufacturing. Companies from adidas to Vitamix are making impossible products a reality every day. Whether it's new product innovation or product improvement, Carbon gets you to market faster than ever before. Imagine, design, and produce within days or weeks on a single manufacturing platform. With our patented Digital Light Synthesis™ (DLS™) technology, only Carbon delivers end-use parts with industrial-grade materials and exceptional surface finish. Whether you are making one or a million, imagination is your only boundary.



CONSUMER

Adidas Futurecraft 4D
Material: EPU 41



AUTOMOTIVE / INDUSTRIAL

*Ford Mustang GT500 Electric
Parking Brake Bracket*
Material: EPX 82



DENTAL

Digital Dentures
Materials: Dentsply Sirona
Lucitone Digital Print™ 3D
Denture Resin, IPN 3D™
Digital Denture Teeth



LIFE SCIENCES

*Becton Dickinson
Hemocytometer Adapter*
Material: MPU 100

Better Products

- Digital Light Synthesis™ forms parts from programmable resin with end-use finish
- Create impossible geometries and designs unavailable through molding or milling
- Reimagine multi-part assemblies that can now be formed as a single, precision piece

Fast Time to Market

- Fastest time to first part and digital tuning for more iterations and short lead times
- No tooling costs, no rework and no long lead times
- Cost effective production at any scale, no minimums, one or a million

ALL IN ONE

Hardware

- Digital manufacturing platform for production at any scale
- Exceptional surface finish and isotropic, layerless parts
- Full digital thread with connected devices

Materials

- Engineering-grade resins for rigid and elastomeric applications
- Unmatched mechanical performance characteristics
- Dual-cure programmable resins available with production pricing

Software

- Preventative and on-demand support with remote monitoring
- Secure, cloud-based fleet management with regular updates
- Real-time access production data

Support

- Software-based support enables rapid remote troubleshooting
- Full manufacturing support to help customers hit production goals
- A true partnership in success

Carbon®

Carbon, Inc.
1089 Mills Way
Redwood City, CA 94063
+ 1.650.285.6307

info@carbon3d.com
carbon3d.com

UPDATED 03.11.2020

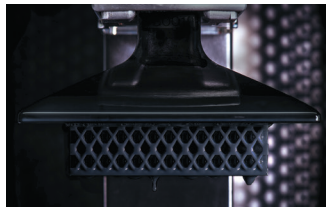
Our Materials

Create real products today with the widest range of production-ready properties featuring high resolution and exceptional surface quality.



MPU 100

Multi-Purpose Polyurethane: bio-compatible, sterilizable, and durable



EPU 40, EPU 41

Elastomeric Polyurethane: highly elastic, tear-resistant, and resilient



SIL 30

Silicone: soft touch, biocompatible, and tear-resistant



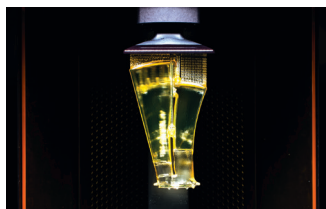
RPU 70, 130

Rigid Polyurethane: versatile, tough, and rigid



FPU 50

Flexible Polyurethane: impact and abrasion resistant



CE 220, 221

Cyanate Ester: highly temperature resistant, strong, and stiff



EPX 82

Epoxy: temperature resistant and tough

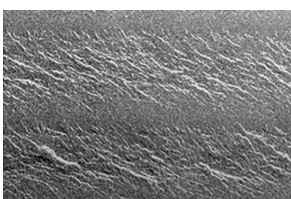


Ten dental resins for full-service labs

Programmable Liquid Resins

Conventional 3D printing techniques are based on layer-by-layer lamination, creating trade-offs between surface finish and mechanical properties. As a result, their parts are often weak, porous, and prone to delamination. Carbon Digital Light Synthesis™ (DLS™) technology uses programmable liquid resins to create strong, layer-less parts. A secondary thermal reactive chemistry is embedded to produce isotropic parts with outstanding mechanical properties and surfaces that reflect injection molded plastics.

TRADITIONAL



400 μ m

CARBON



400 μ m

Carbon Hardware

Carbon has end-to-end solutions for any application. Design, engineer, make, and deliver end-use parts using one common manufacturing workflow. Scale-up and out with our software linking multiple printers and providing full fleet management. Start with our M2 printer, add the Smart Part Washer, and grow into our large L1 printer.



The Carbon printer family and Smart Part Washer.