



Consumer

Adidas 4DFWD
Material: EPU 44



Consumer

Specialized S-Works Power
Saddle with Mirror
Material: EPU 41



Consumer

Super Tacks X with NEST Tech
Helmet Liner
Material:
Dampening Elastomer



Dental

Thermoforming models
Material: DPR 10

Carbon[®]

Carbon, Inc.
1089 Mills Way
Redwood City, CA 94063
+ 1.650.285.6307

sales@carbon3d.com
carbon3d.com

UPDATED 08.18.2021

Carbon L1 Printer

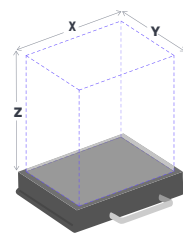
REVOLUTIONARY LARGE FORMAT 3D PRINTING WITH INDUSTRY-LEADING MATERIALS

The L1 printer is a proven tool for product designers, engineers, and manufacturers who need to consistently produce large parts or many smaller parts. Companies like adidas, Specialized, and Riddell are scaling production to the millions with the L1. Additionally, dental labs are utilizing the L1 to quickly ramp up clear-aligner model production.

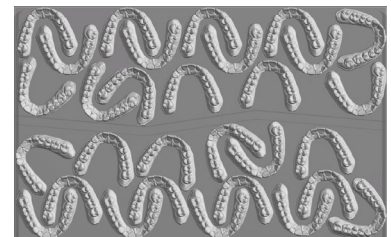
L1 Value

- Exceptional for printing larger parts in single prints or many smaller parts for high-throughput production.
- Offers over 1,000 cm² of build area.
- Produce functional prototypes quickly, then move to high-volume production on the same platform.

XY, Z resolution	160 μm; 25, 50, or 100 μm
General Accuracy	Up to ±0.003 in + 0.001 in per in dimension size Up to ±70 μm + 1 μm per mm dimension size
Production Repeatability	Up to ±0.002 in Up to ±40 μm
Build Volume	15.7 in x 9.8 in x 20 in 400 mm x 250 mm x 508 mm



X 400 mm (15.7 in)
Y 250 mm (9.8 in)
Z 508 mm (20 in)



"The Carbon DLS process helped our team go from first prints to serial production in less than 100 days, and delivered parts from two continents within the next 100 days. This achievement highlights rapid industrialization, one of OECHSLER's core competencies, and the flexibility and speed enabled by Carbon DLS."

LENA RUDEL
Senior Director of Technology Management
OECHSLER